

Feasibility Study

The Trinity Centre

for

Trinity Community Arts

PREFERRED OPTION

August 2012



gcp Chartered Architects
18-19 Londonderry Farm
Keynsham Road
Willsbridge
Bristol
BS30 6EL
t 0117 932 8888
f 0117 932 4888
mail@gcparch.co.uk
www.gcparch.co.uk

OVERVIEW

Development kept within existing building perimeter.

EXTERNALS

- Upgrade access to all entrances to ensure wheelchair accessibility
- Remove conifer trees from Clarence Road
- Provide fence/gates to garden
- Community outdoor kitchen installed in the existing garden
- New childrens play area
- New directional signage
- New two storey workshop and store to serve main building

GROUND FLOOR

- Main Hall capacity increased to 700 + 50 staff.
- Office and reception relocated to the original main entrance
- Separate shower/changing facilities installed with access to ground and first floor halls
- Small extension to the rear to accommodate increased WC provision and air handling unit on roof
- Bar relocated and made usable as a day cafe with direct external access
- New passenger lift to serve all upper levels located in main entrance lobby

FIRST FLOOR

- New lift from ground floor
- Two new training rooms
- New passenger lift to serve all upstairs spaces
- New bar area with folding screens to close off space if required
- I.T facilities incorporated in lockable cupboard within smaller hall space
- Large performance space to seat approximately 200
- New flooring throughout performance spaces

NEW SECOND FLOOR

- New lift from ground floor
- New mezzanine floor to include small office space and two training rooms
- New projector/sound/light room to serve hall

NEW THIRD FLOOR

- Stair access from second floor
- New mezzanine floor to incorporate plant room and server room

ISSUES

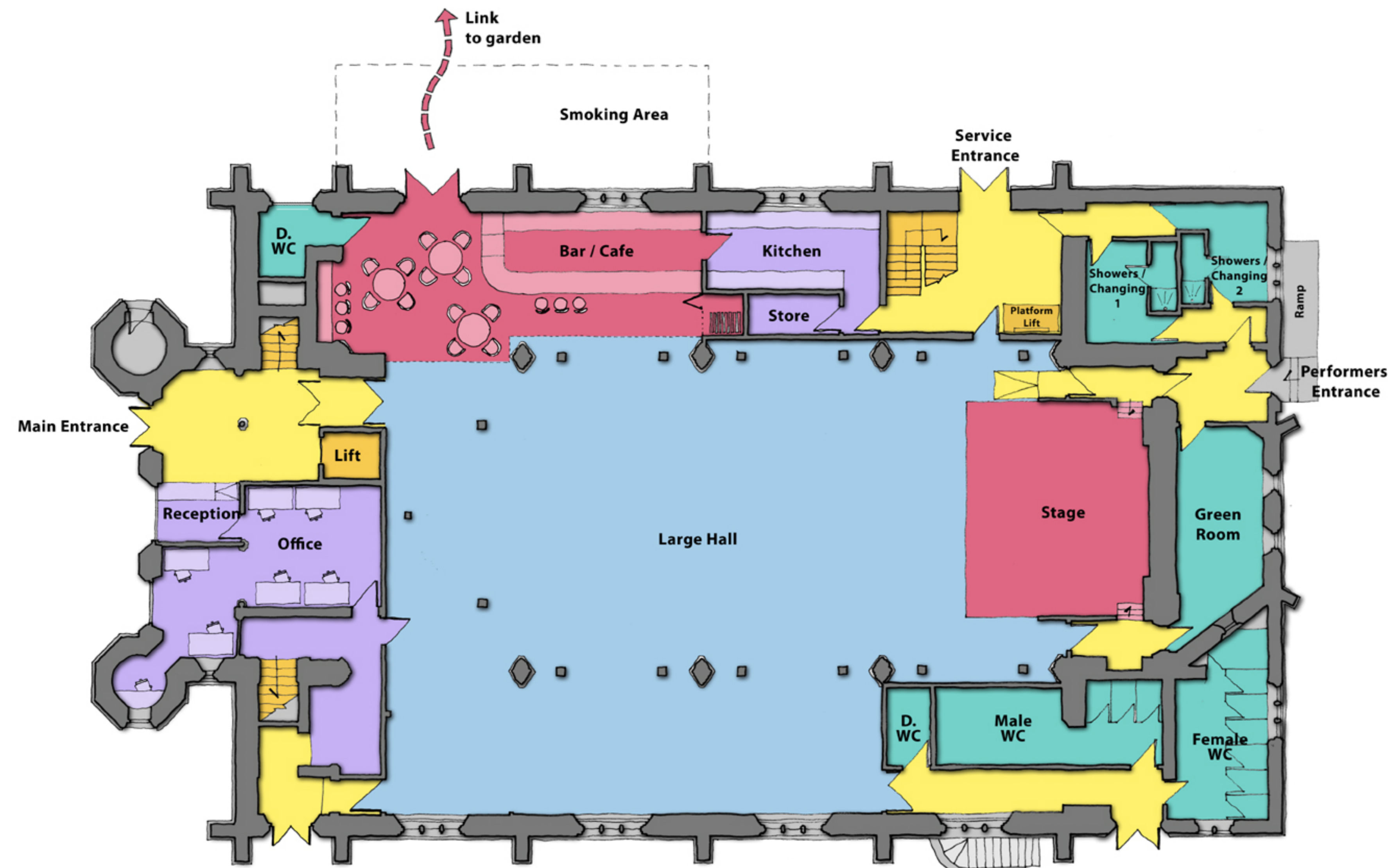
- Limited storage space within main building
- Bar servery area decreased



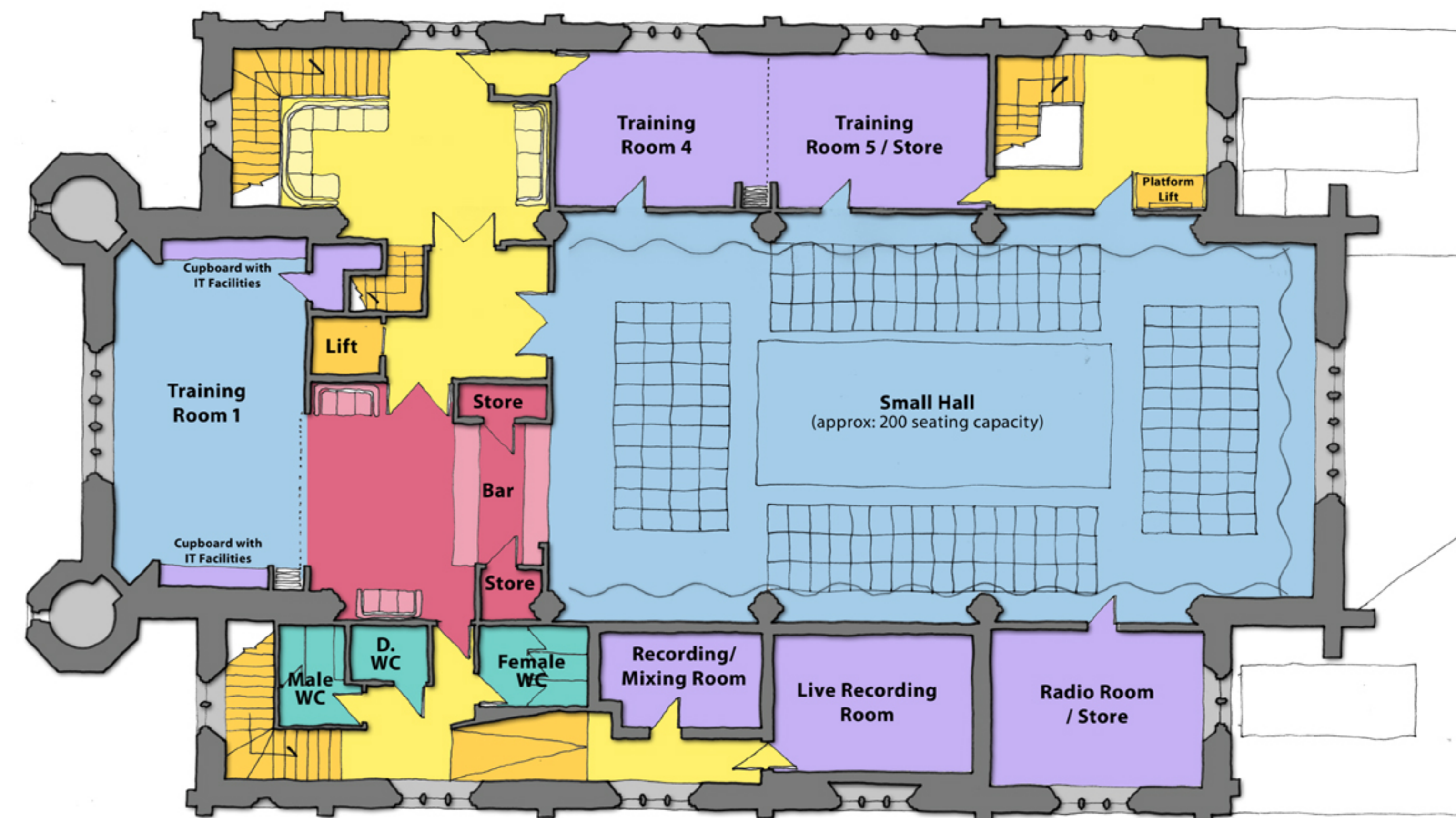
Extent of Development on Site
Scale: 1:250@A0

Redevelopment at The Trinity Centre - Preferred Option

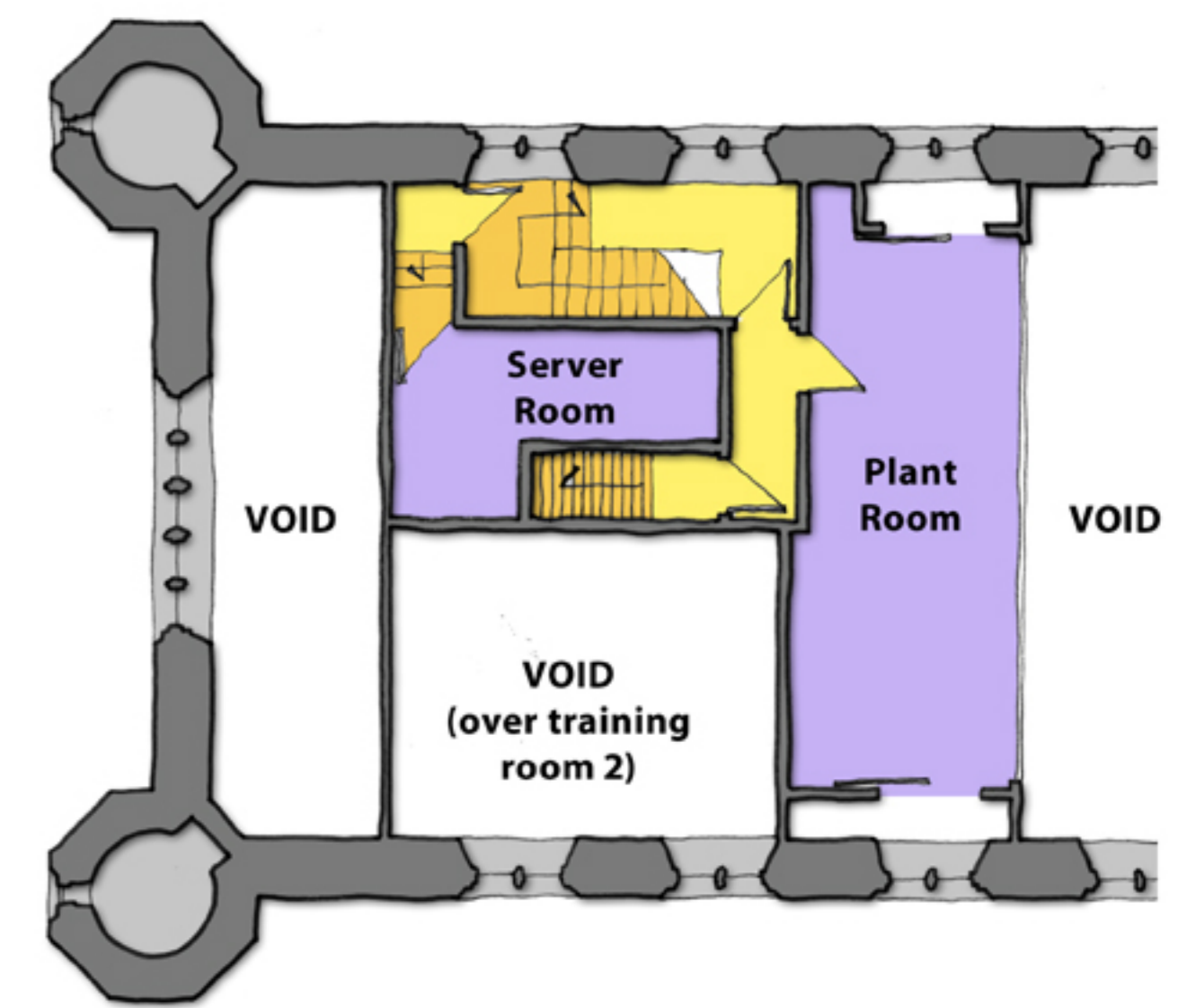
Scale 1:100 approx @ A0



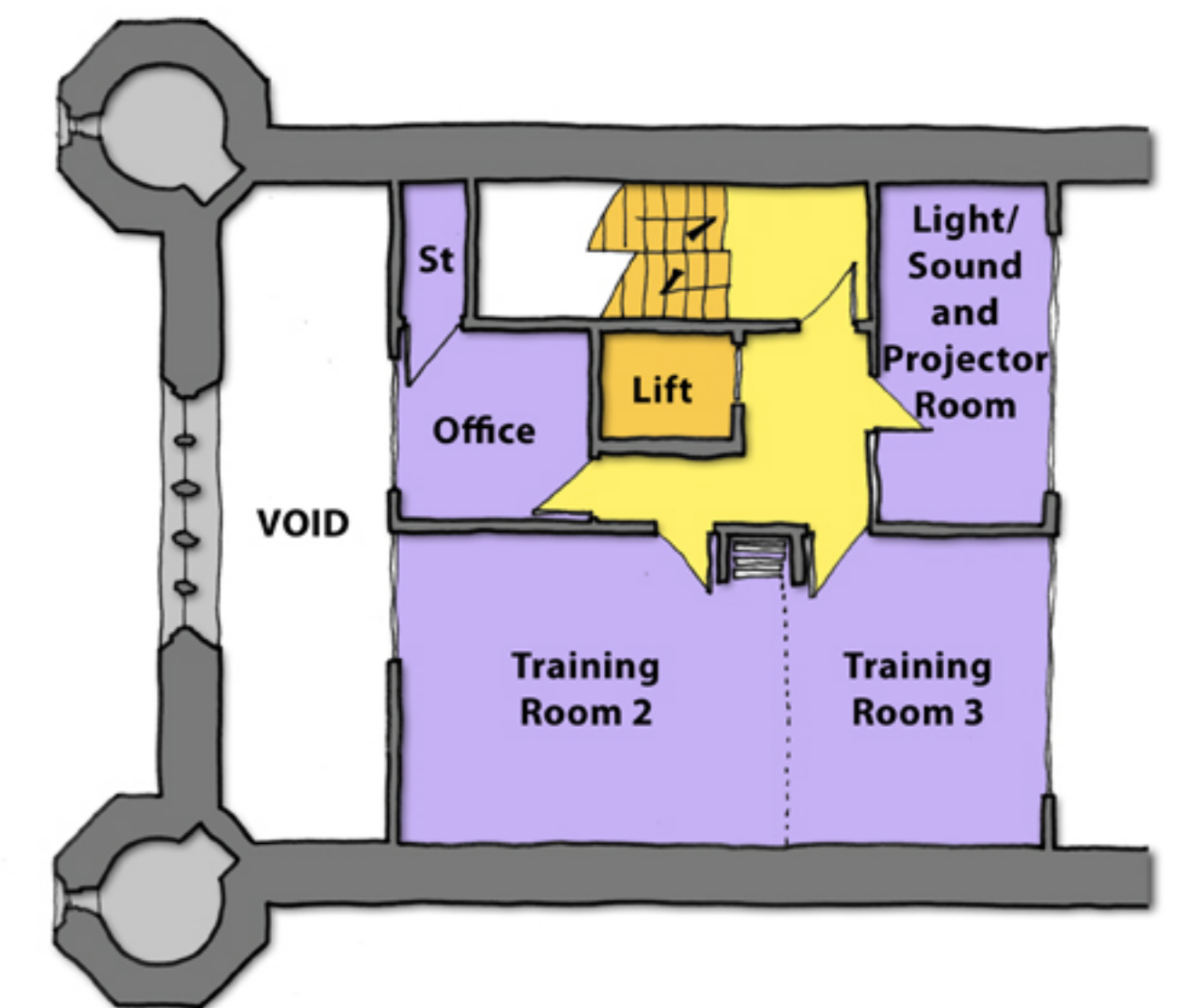
Ground Floor



First Floor



Third Floor



Second Floor